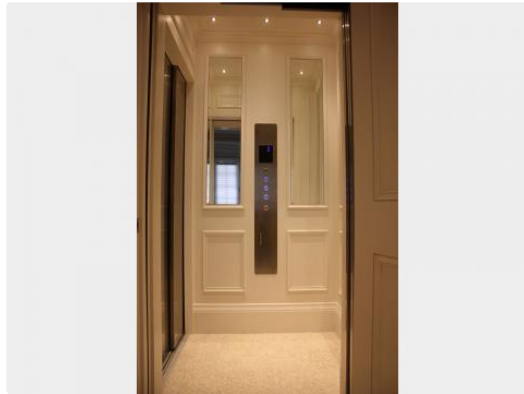




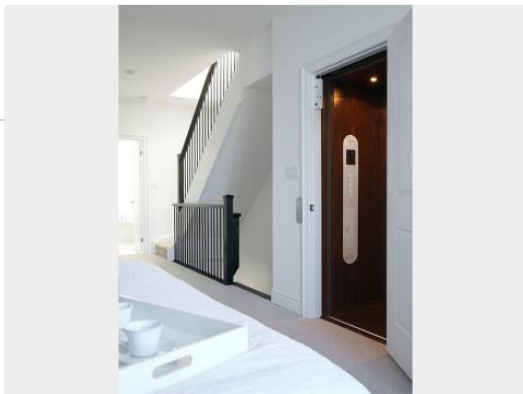
# United States CONSUMER PRODUCT SAFETY COMMISSION

## Cambridge Elevating Recalls Home Elevators Due to Fall Hazard



<b>CAMBRIDGE ELEVATING</b>	
Serial Number	2013xxx
Job Name	XXXXX
Model	Hydrocam
<b>CAMBRIDGE ELEVATING</b>	
CONFORMS TO ANSI A84.1 STD A17.1 CERTIFIED TO CSA STD 844.1	
387453	
1261 Industrial Road, Cambridge, Ontario N3H 4W3 Phone 519-653-4222 Toll Free 1-800-265-3579 Fax 519-653-9927	

<b>CAMBRIDGE ELEVATING</b>	
Serial #:	2013xxx
Model:	HERITAGE 3 PANEL
Suspension:	2 Ropes 3/8 DIA. 7X19
Breaking Strength:	69 KN
Car Weight:	1000LBS/454KG
Capacity:	1500LBS/680KG
Rated Speed:	40 FT/MIN .2M/S
Rail Lubrication:	N/A
Date of Manufacture:	21/06/13
Technical Support: 1-800-265-3579	



MANUFACTURED BY  
**CAMBRIDGE ELEVATING**  
TOLL FREE: 1-800-265-3579

<b>CAMBRIDGE ELEVATING</b>	
Serial #	201204
Model	CAMBRIDGE 3 PANEL
Suspension	ROPE 1.3 MPa
2 Ropes 3/8 DIA. 7X19	
Breaking Strength:	69 KN
Car Weight:	1000LBS/454KG
Capacity:	1500LBS/680KG
Rated Speed:	40 FT/MIN .2M/S
Rail Lubrication:	N/A
Date of Manufacture:	06/06/2012
Technical Support: 1-800-265-3579	

**CAUTION**  
USE COPPER CONDUCTOR ONLY

**CAUTION**  
THIS UNIT IS FED BY MORE THAN ONE SOURCE OF POWER

HENDAN  
DEC  
7  
5+

## Recall Summary

**Name of product:**

Home elevators

**Hazard:**

The landing door on the elevators can unlock without the elevator present, posing a fall hazard.

**Remedy:**

Repair

**Recall date:**

March 27, 2019

**Units:**

About 680 (in addition, about 1700 were sold in Canada)

---

Consumer Contact:

**Cambridge Elevating at 800-265-3579  
from 8:30 a.m. to 4:30 p.m. ET Monday  
through Friday or online at  
[www.cambridgeelevating.com](http://www.cambridgeelevating.com) and  
click on Recall Notifications for more  
information.**

---

## Recall Details

### In Conjunction With:



### Description:

This recall involves Cambridge Elevating Elmira, Heritage & Hybrid model home elevators using the first and second generation micro-controller systems (BES 1 & BES 2). “Cambridge Elevating” is printed on the label inside the elevators. The elevators have an operating panel inside the cab with a digital display, a stop button, the elevator capacity and a phone box. Only elevators with production date codes 1/2/2009 through 29/11/17 printed on the manufacture label inside the elevator wall are included in the recall.

### Remedy:

Consumers should immediately stop using the recalled elevators and contact the firm to be directed to a local certified technician for a free repair.

### Incidents/Injuries:

The firm has received one report of the elevator landing door opening without the elevator present. No injuries have been reported.

### Sold At:

Cambridge Elevating, Western Elevator, Seaside Elevator and Canwest Elevator & Lifts and other authorized dealers nationwide from January 2009 through November 2017 for between \$15,000 and \$60,000

### Manufacturer(s):

Cambridge Elevating, of Cambridge, Ontario Canada

### Importer(s):

Seaside Elevator LLC, of Little River, S.C., Coastal Carolina Elevators, of Little River, S.C. and All-Island Elevator, of Hampton Bays, N.Y.

**Manufactured In:**

Canada

**Recall number:**

19-091



This recall was conducted, voluntarily by the company, under CPSC's Fast Track Recall process. Fast Track recalls are initiated by firms, who commit to work with CPSC to quickly announce the recall and remedy to protect consumers.