



IUEC INCIDENT SUMMARY

CLOSE CALLS & INJURIES

INJURY

SEPTEMBER 3, 2024



Description of Incident

Control Type: Electric

Machine Type: Traction – MRL

Work Type: Construction

Speed: 350 ft/min, Capacity: 3,500 lbs

Rise: 4 Floors

Hoistway Configuration: Duplex 4 Car Group

JHA/JSA Completed: Yes

- A construction crew was working in the pit installing rail brackets and the first set of guide rails
- Plumbers were working in the lobby area of the top landing and accidentally kicked a piece of pipe down the hoistway, striking the temporary mechanic in the face
- The top floor lobby had a lockable door and decking for overhead protection but lacked a toe guard at floor level

Current Status:

The TM suffered multiple broken bones in his face and had two metal plates installed to support the broken bones. He will be out of work for 4-6 additional weeks while in recovery and for further evaluation.





Recommendations & Lessons Learned

- Always follow the company safety policy
- Always perform a JHA/JSA as per company policy
- Always notify the General Contractor and other trades when arriving on site and beginning work in the hoistway

Possible Root Causes:

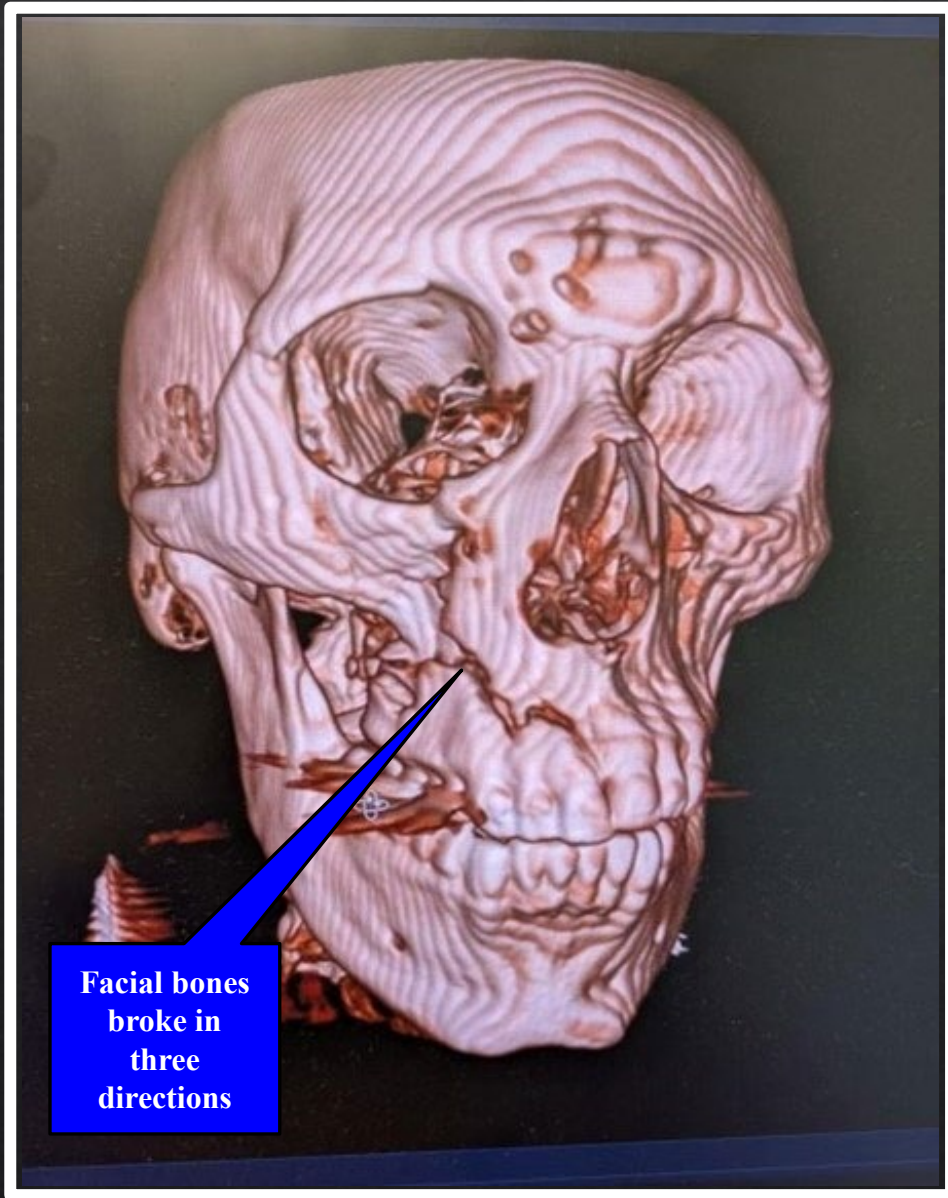
- Lack of communication between General Contractor and other trades
- Unguarded holes in overhead protection
- Stacked work

Field Employees' Safety Handbook

Section 8.4 Overhead Protection

(b) In general, overhead protection can be achieved by one or a combination of the following examples:

- (4) Sealing off corridors to prevent other trades from working near or passing by wall openings
- (7) Prohibiting simultaneous work in hoistway and machine room with unguarded holes



Facial bones
broke in
three
directions