

IMMEDIATE ACTION REQUIRED BULLETIN

Tuesday, August 6, 2019

Please copy and distribute to all personnel as required.

Equipment: Endura HMRL

QCR: 67340

Subject: Endura HMRL Installation using the APU Process

Effective immediately: The use of a runbug on CON9 on the IOD board is not allowed throughout the entire installation process of the Endura HMRL. The current installation process is under review and will be updated in the future.

Until further notice: The entire installation process must be performed using the following procedure:
Auxiliary Pump Unit Start Up Procedure (also located in the *Endura MRL* manual).

Safety Notes

- Buffer stands and springs must always be installed.
- Pit props must be used when working on the power unit and any other pit equipment.

See images on the following pages for all steps in this procedure.

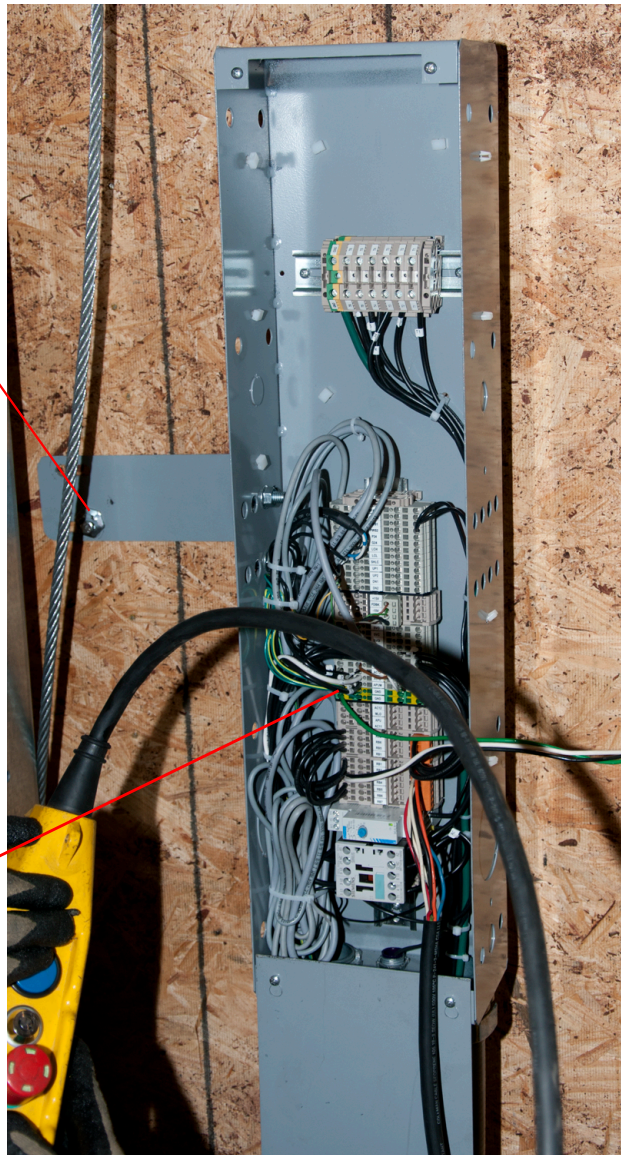
1. Temporarily mount the junction box to the wall.
2. Remove the cover from the junction box.
3. Verify that the orange connector is plugged into terminals RB1, RB5, RB6, and RB2.
4. Plug the runbug into the RB1-RB7 terminals.
5. Plug the Manufacturing supplied 110V male plug into a wall receptacle or an extension cord.
6. See the job wiring diagrams for additional information.

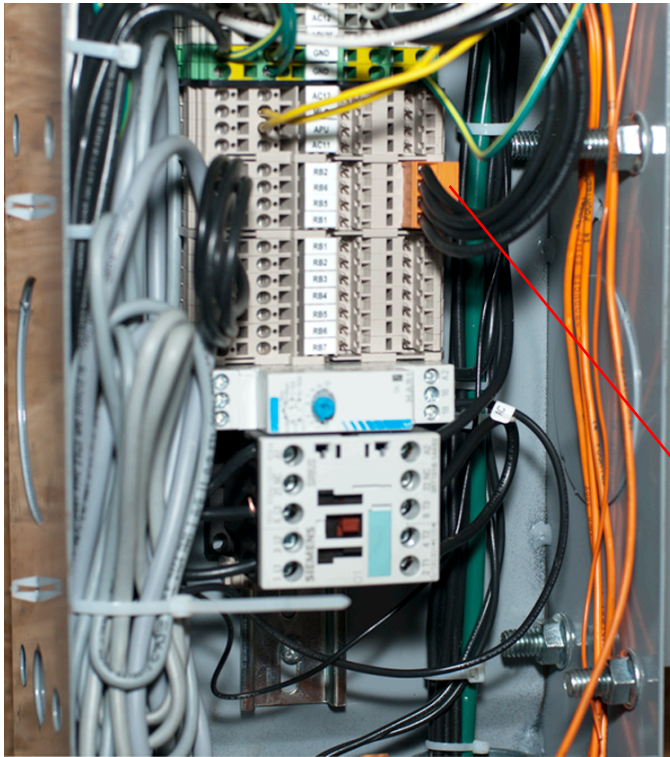
All work described in this Bulletin must be performed in accordance with provisions described in the thyssenkrupp Elevator Corporation Safety Manual. All work must conform to the Local and National Code provisions in effect in your area. This Bulletin is for Internal Use Only.

This and all published Field Engineering Bulletins are available at: [TKE WIKI](#)

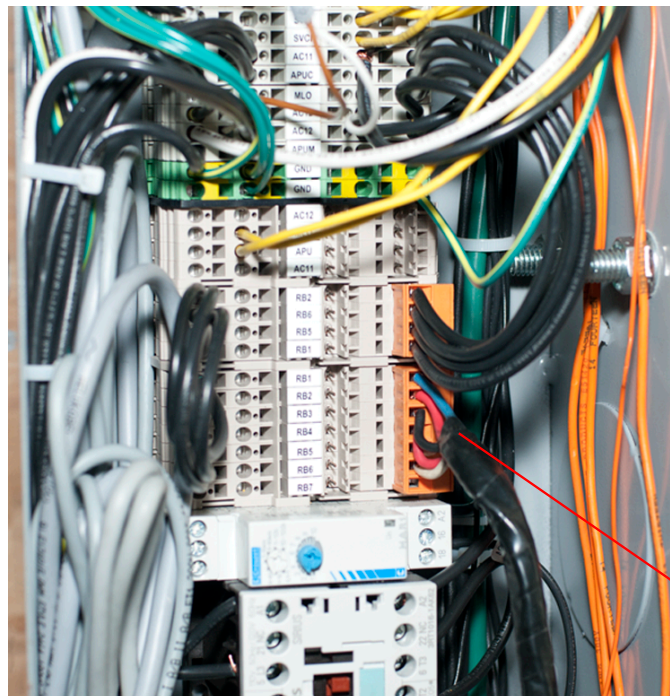
Temporarily Mount the Junction Box to the Wall

Connect the 110V Power Cord to the Junction Box

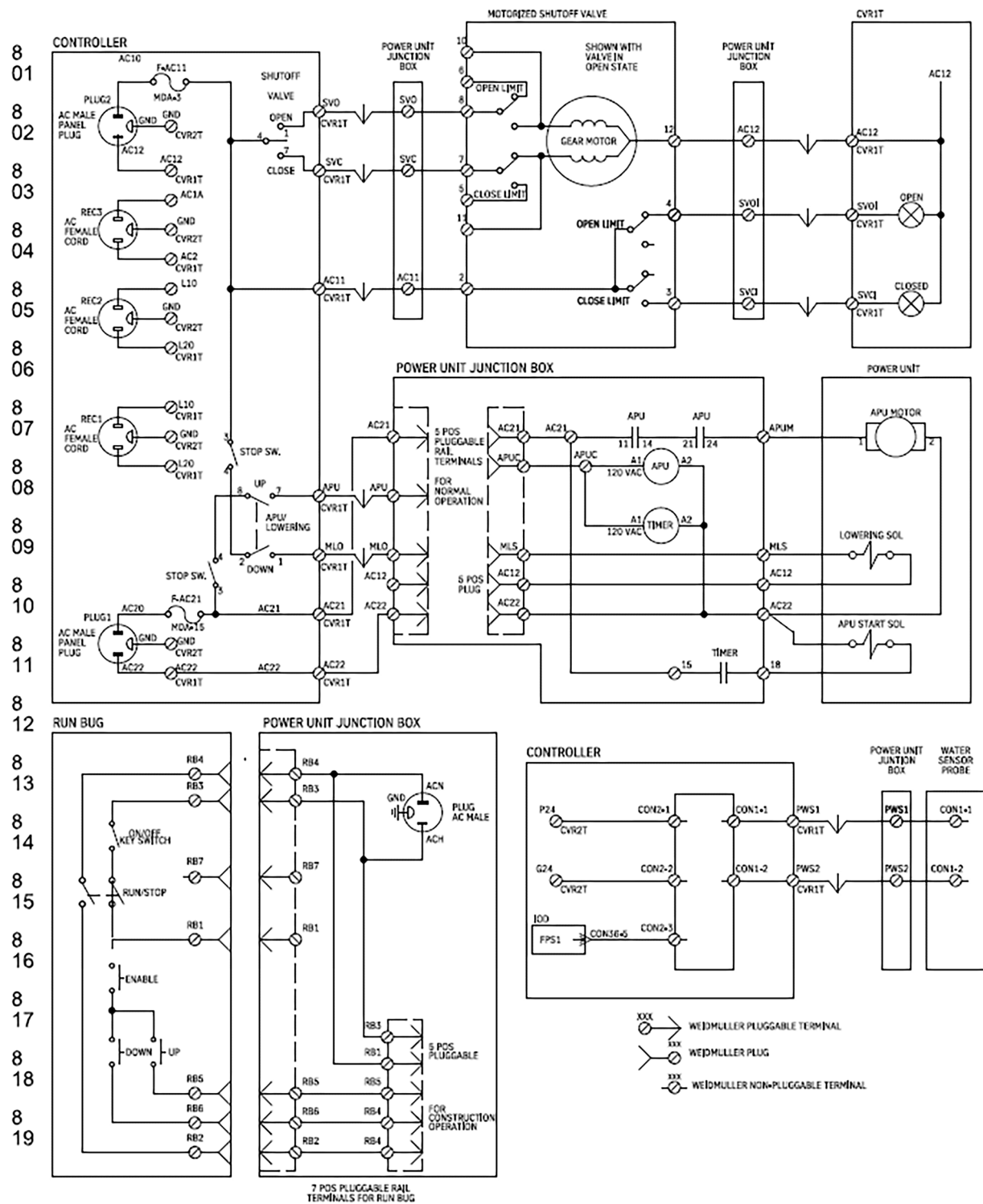


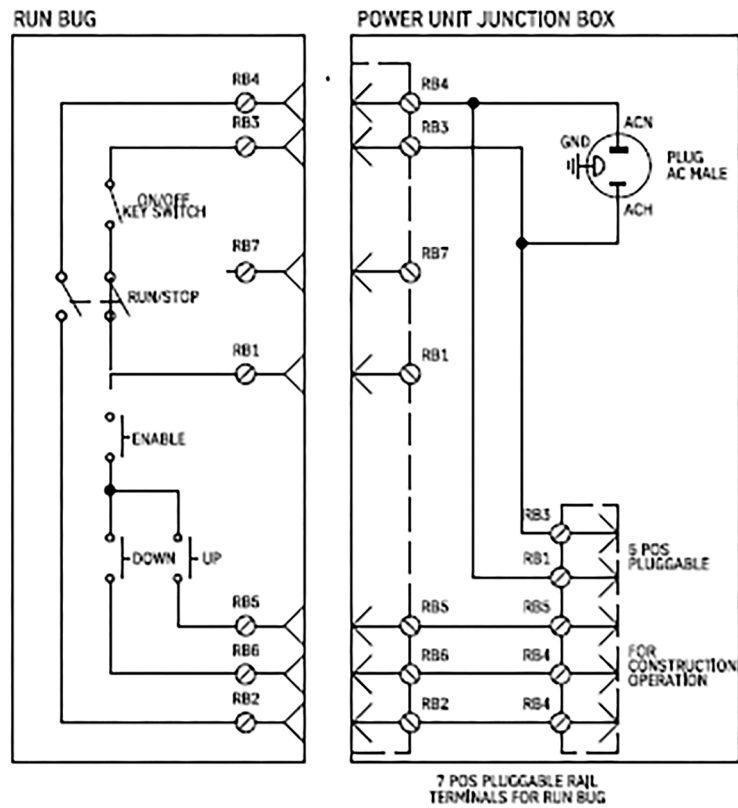


Verify that the 4 Terminals on the Orange Connector are plugged on the RB1, RB2, RB5, and RB6 Terminals.



Plug the Runbug into the RB1–RB7 Terminals.





Enlarged View of Runbug Connections