

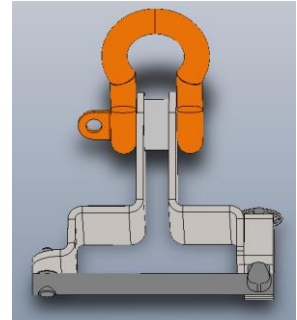
Title	Bulletin No.	Revision	Issue Date	Page
Quality Bulletin – 11-288 and 11-289, T-Rail Lifters	16-01	00	08/22/16	1 of 1
THIS DOCUMENT IS THE PROPERTY OF WURTEC. IT CONTAINS PROPRIETARY AND CONFIDENTIAL INFORMATION WHICH CANNOT BE REPRODUCED, DISTRIBUTED, DISCLOSED OR USED FOR MANUFACTURE OR SALE WITHOUT THE EXPRESSED WRITTEN CONSENT OF WURTEC.				

## Quality Bulletin

### 11-288 & 11-289, T-Rail Lifters

Dear Customer/Distributor,

Our records indicate that you've purchased either an 11-288 or an 11-289 since the new T-Rail Lifter design was first released on the market in March of 2016. The purpose of this letter is to advise you that on 08-18-16, Wurtec was made aware that under certain circumstances, the new T-Rail Lifter design may allow the back rod to be manually worked over the top of the fish plate and fish plate fasteners. As this product is used to hoist rail sections, clearance anomalies between the lifter and fishplate hardware may present a potentially unsafe situation.



To remedy this, Wurtec is changing the rail size specifications for 11-288 and 11-289:

	Previous Rail Sizes	New Rail Sizes
11-288	T114, T127-1, T127-2, T140-1	T140-1
11-289	T140-2, T140-3	T140-3

In addition, two (2) new T-Rail Lifters will be offered that will cover the rail sizes no longer applicable to 11-288 and 11-289:

	Rail Size
11-284	T114, T127-1, T127-2
11-290	T140-1, T140-2

In order to correct this issue, Wurtec is offering three (3) options to our customers:

- 1.) ***If your 11-288 or 11-289 T-Rail Lifters can no longer be used based on the rail size; Wurtec will replace your unit with a new model (11-284 or 11-290) at no expense to you.***
- 2.) ***If your T-Rail Lifter still can be used, and you are comfortable doing so, Wurtec will mail you replacement labels to replace the existing ones.***
- 3.) ***If your T-Rail Lifter can still be used, and you are uncomfortable replacing the labels, Wurtec will receive the products back, rework and return them at no cost to you.***

While there have been no documented failures in the field, Wurtec places the utmost emphasis on customer safety as well as product quality. To better serve our customers and continue our commitment to continuous improvement, Wurtec is actively correcting this issue by offering our customers these three options. This quality bulletin is being sent by both email and normal postal service to further assure we are reaching each customer. Please note that you likely will be receiving this bulletin in both formats.

We urge each of our customers to take action as soon as possible in order to assure your equipment is current, compliant and safe for use. To begin the return/rework process, please call our Customer Service team at 800-837-1066 and reference this bulletin. We thank you for your understanding in this matter and apologize for any inconvenience.

Joshua Ball  
Quality Control Manager